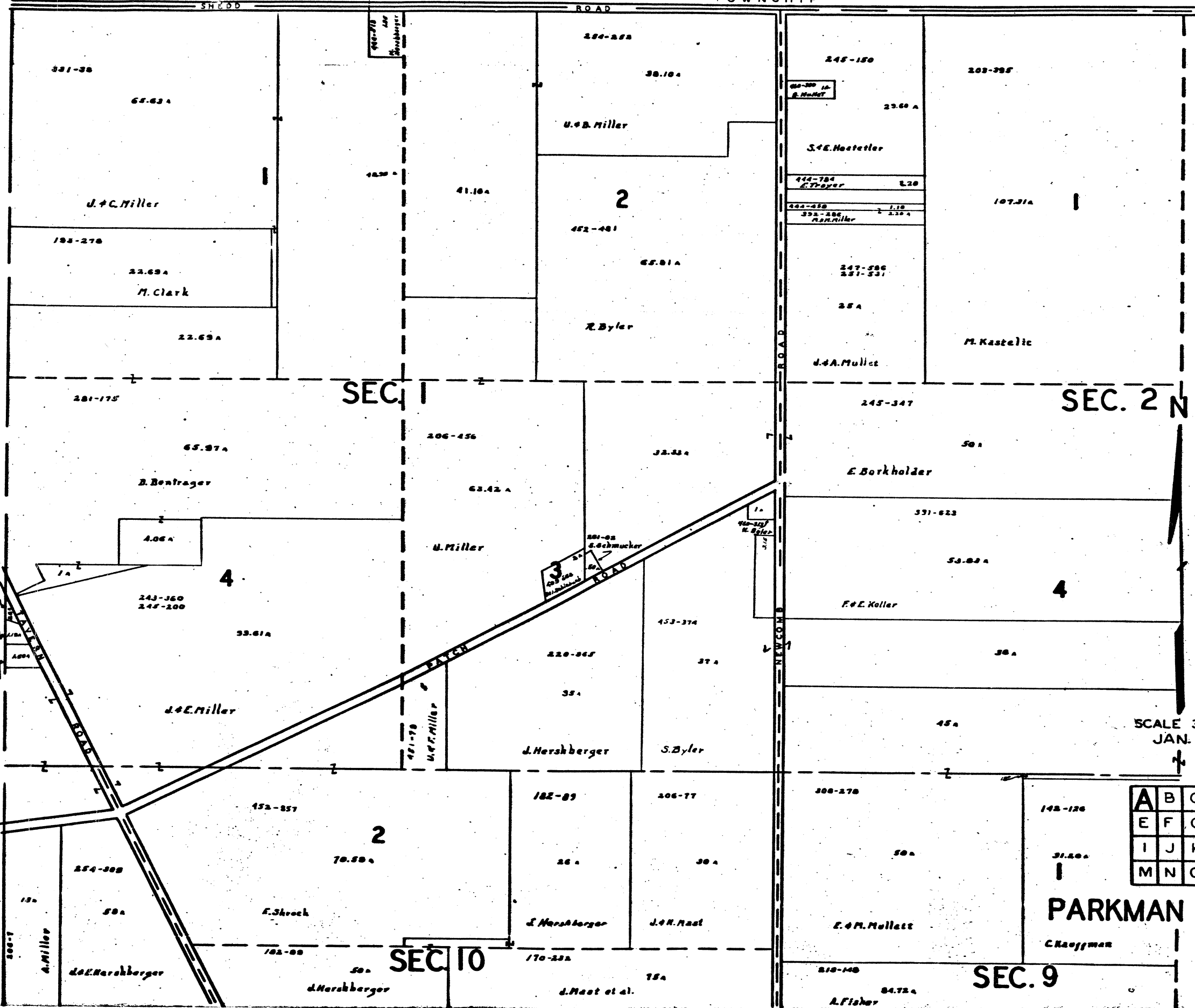


TROY TOWNSHIP

MIDDLEFIELD TOWNSHIP



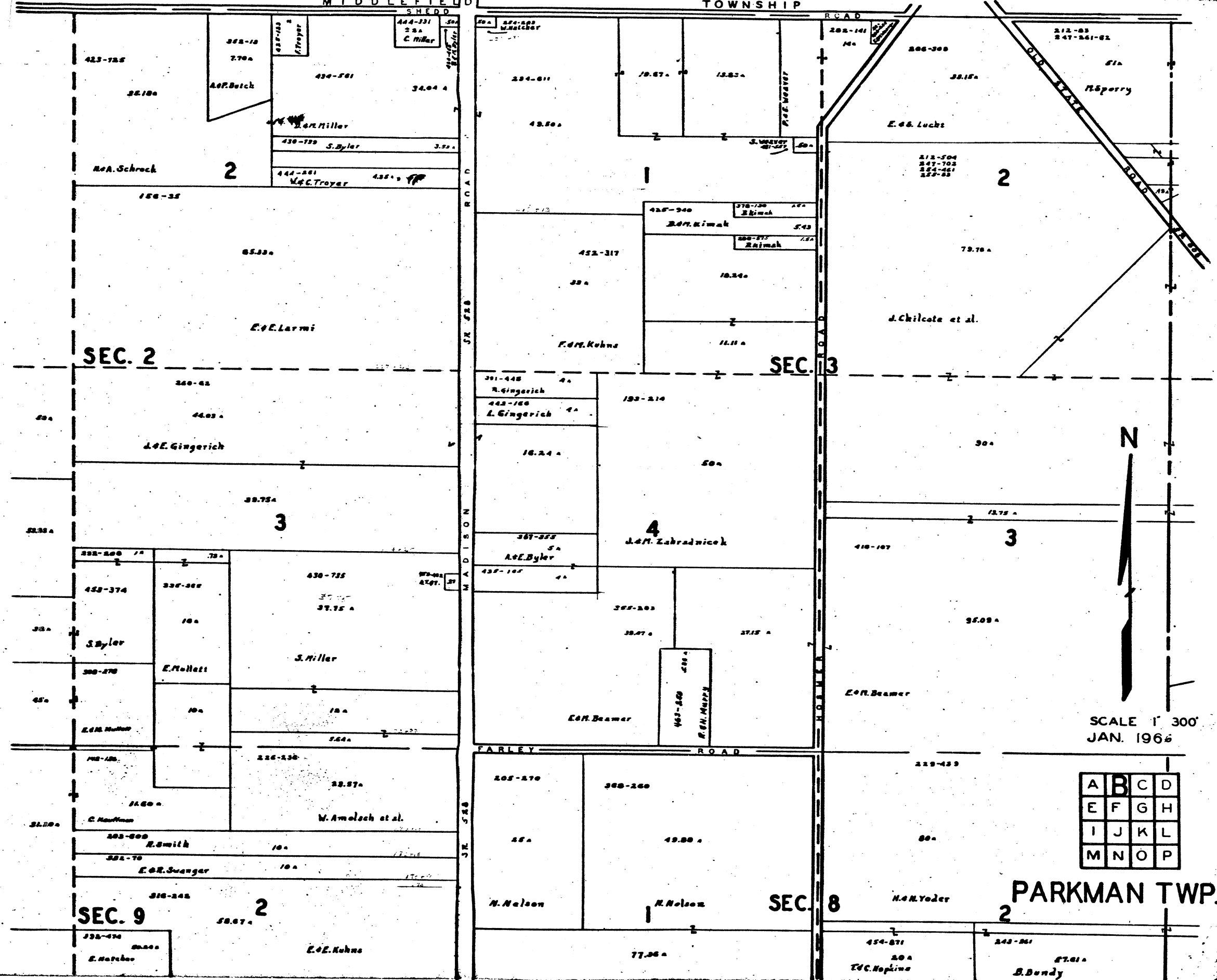
SCALE 300' 1" JAN. 1966

A	B	C	D
E	F	G	H
I	J	K	L
M	N	O	P

PARKMAN TWP.
C. Kauffman

MIDDLEFIELD

TOWNSHIP



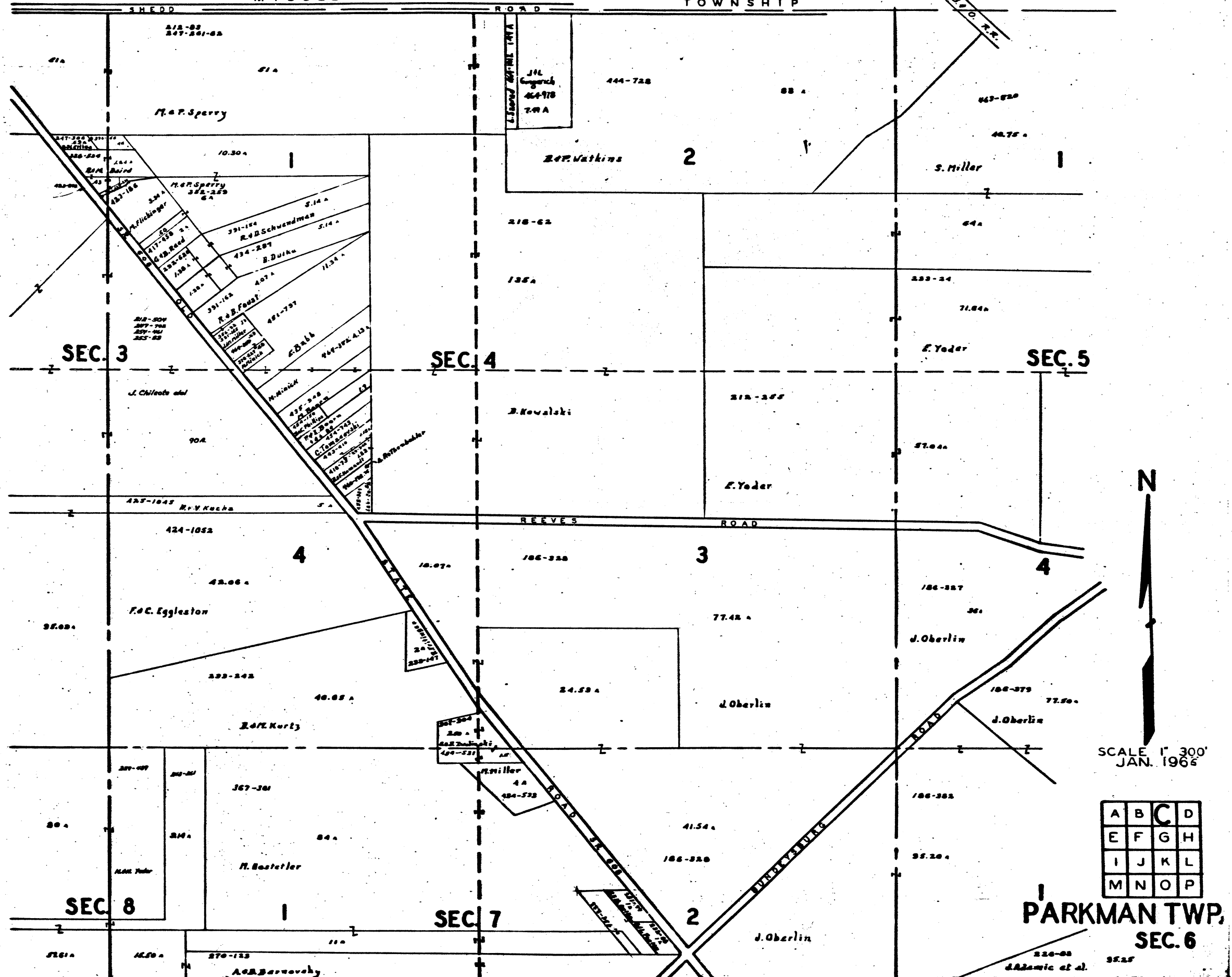
SCALE 1" 300'
JAN. 1966

A	B	C	D
E	F	G	H
I	J	K	L
M	N	O	P

PARKMAN TWP.

MIDDLEFIELD

TOWNSHIP

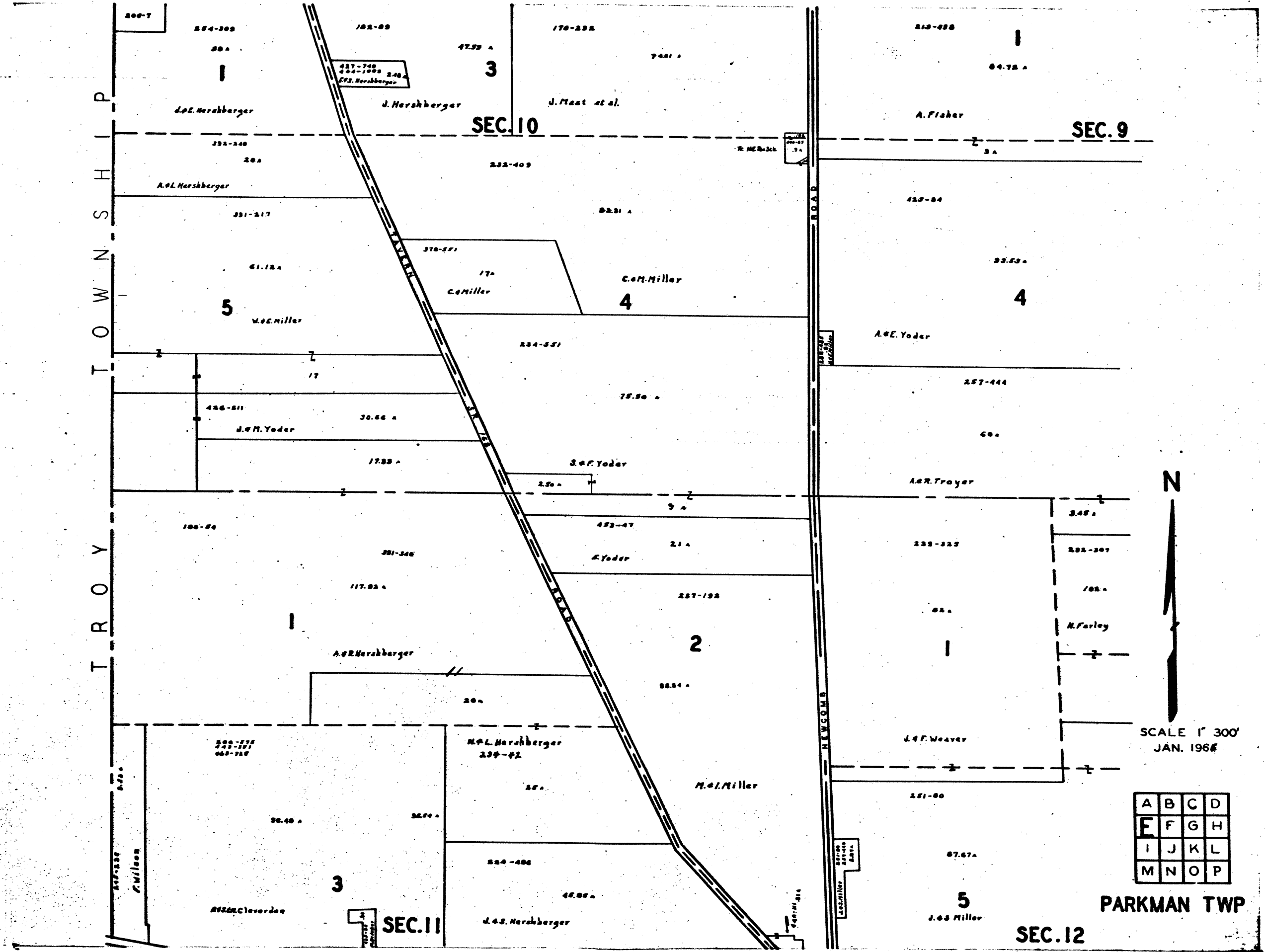


SCALE 1" = 300'
JAN. 1966

A	B	C	D
E	F	G	H
I	J	K	L
M	N	O	P

PARKMAN TWP,
SEC. 6

P
S
H
T
O
W
N
T
R
O
Y



427-760
424-1000 240
E.P. Herzhberger

R. HERZBERGER

W. G. Miller

W. G. Miller

N

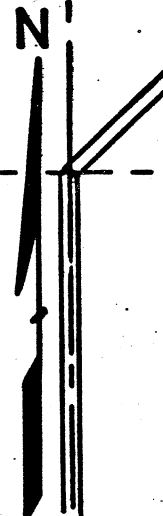
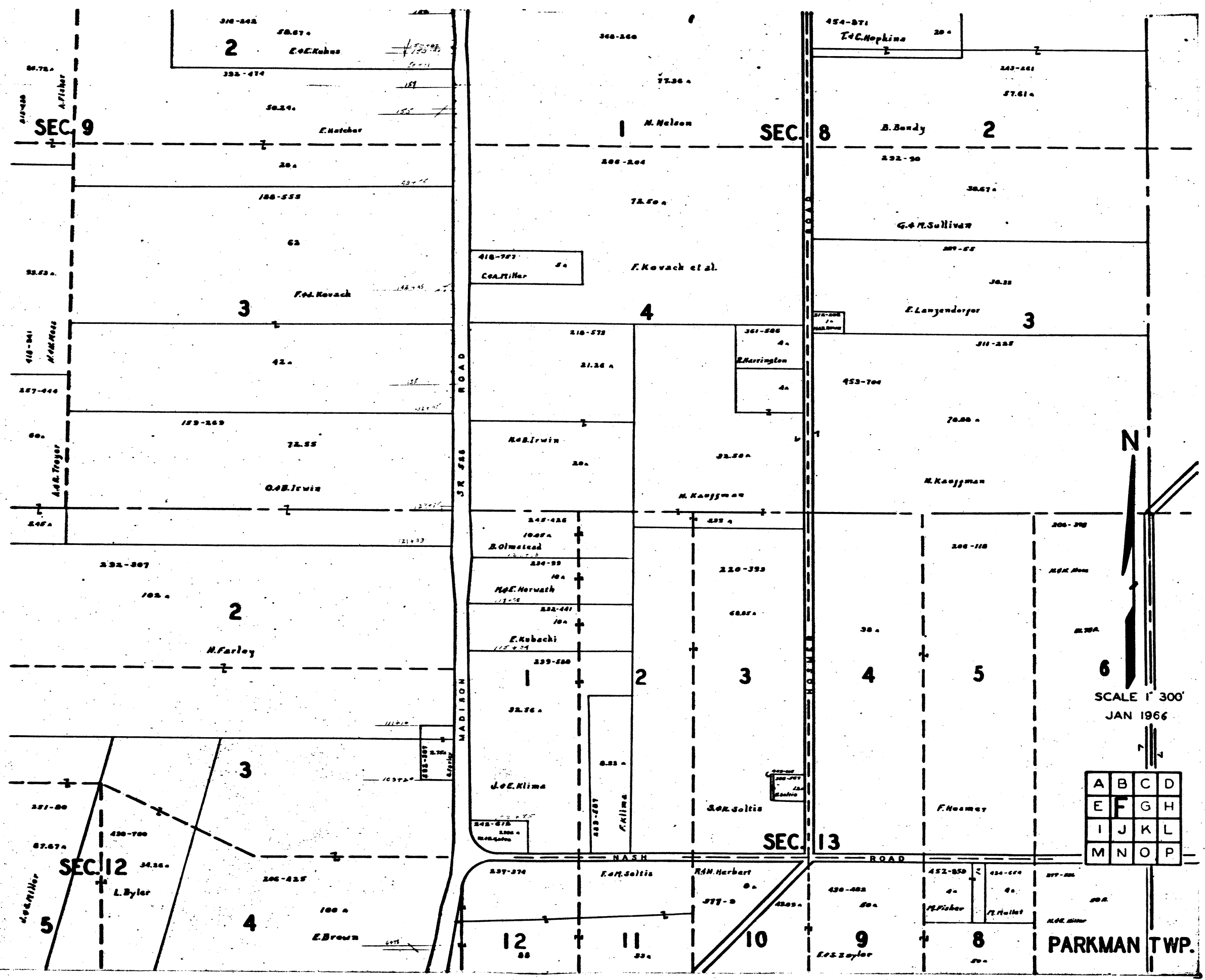
SCALE 1" = 300'
JAN. 1966

A	B	C	D
E	F	G	H
I	J	K	L
M	N	O	P

PARKMAN TWP

SEC. 11

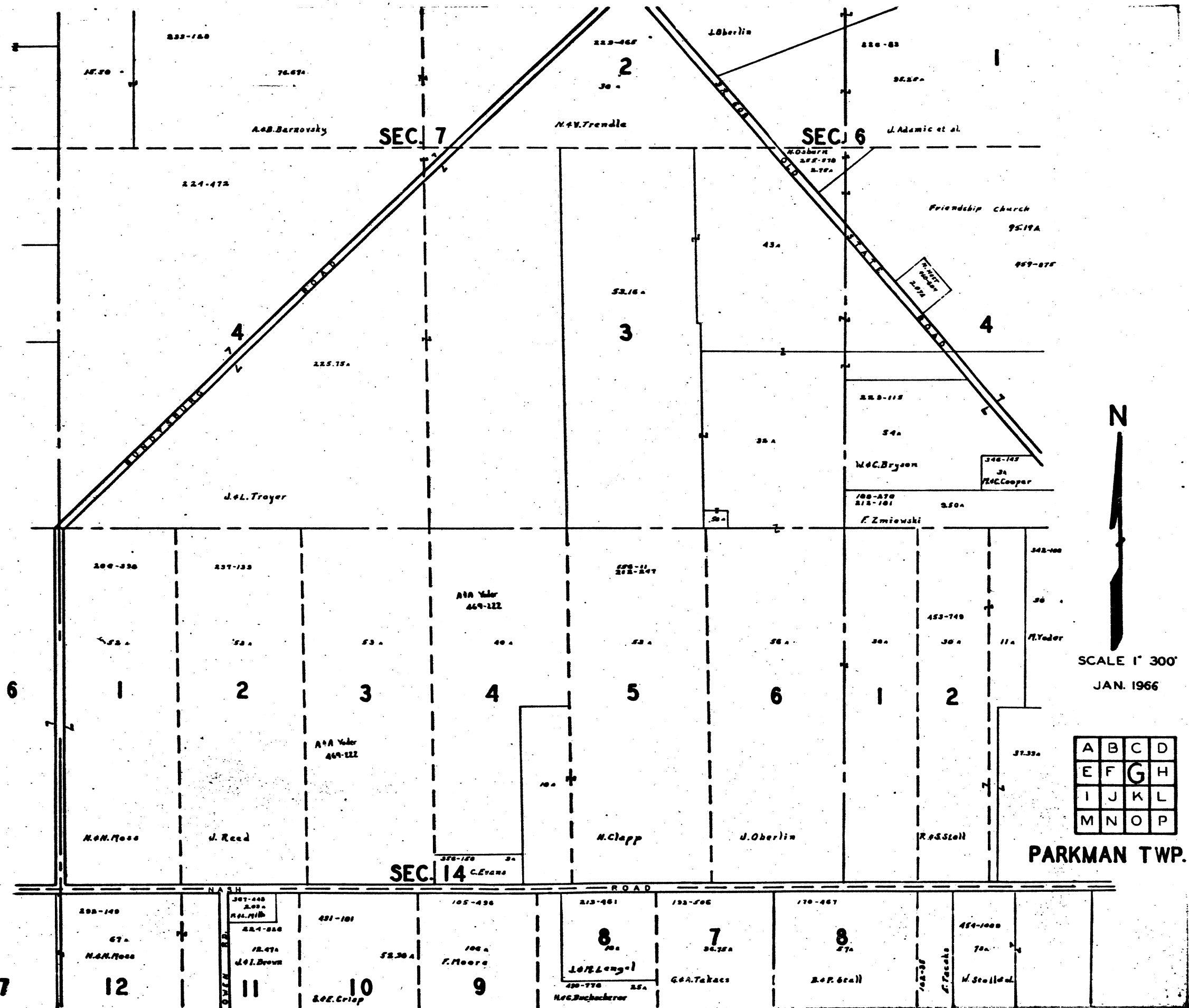
SEC. 12



SCALE 1" = 300'
JAN 1966

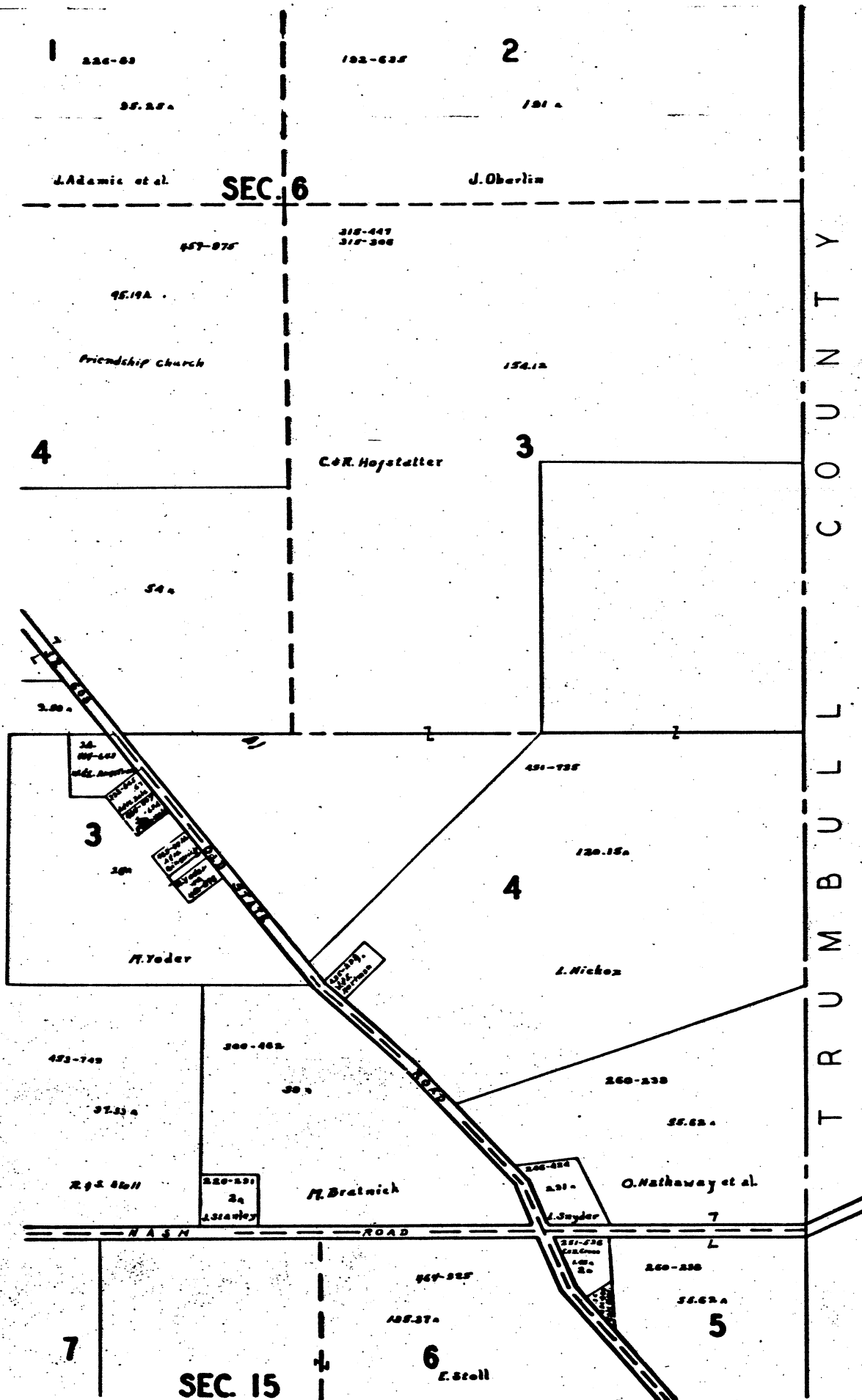
A	B	C	D
E	F	G	H
I	J	K	L
M	N	O	P

PARKMAN TWP.



A	B	C	D
E	F	G	H
I	J	K	L
M	N	O	P

PARKMAN TWP.



T R U M B U L L C O U N T Y

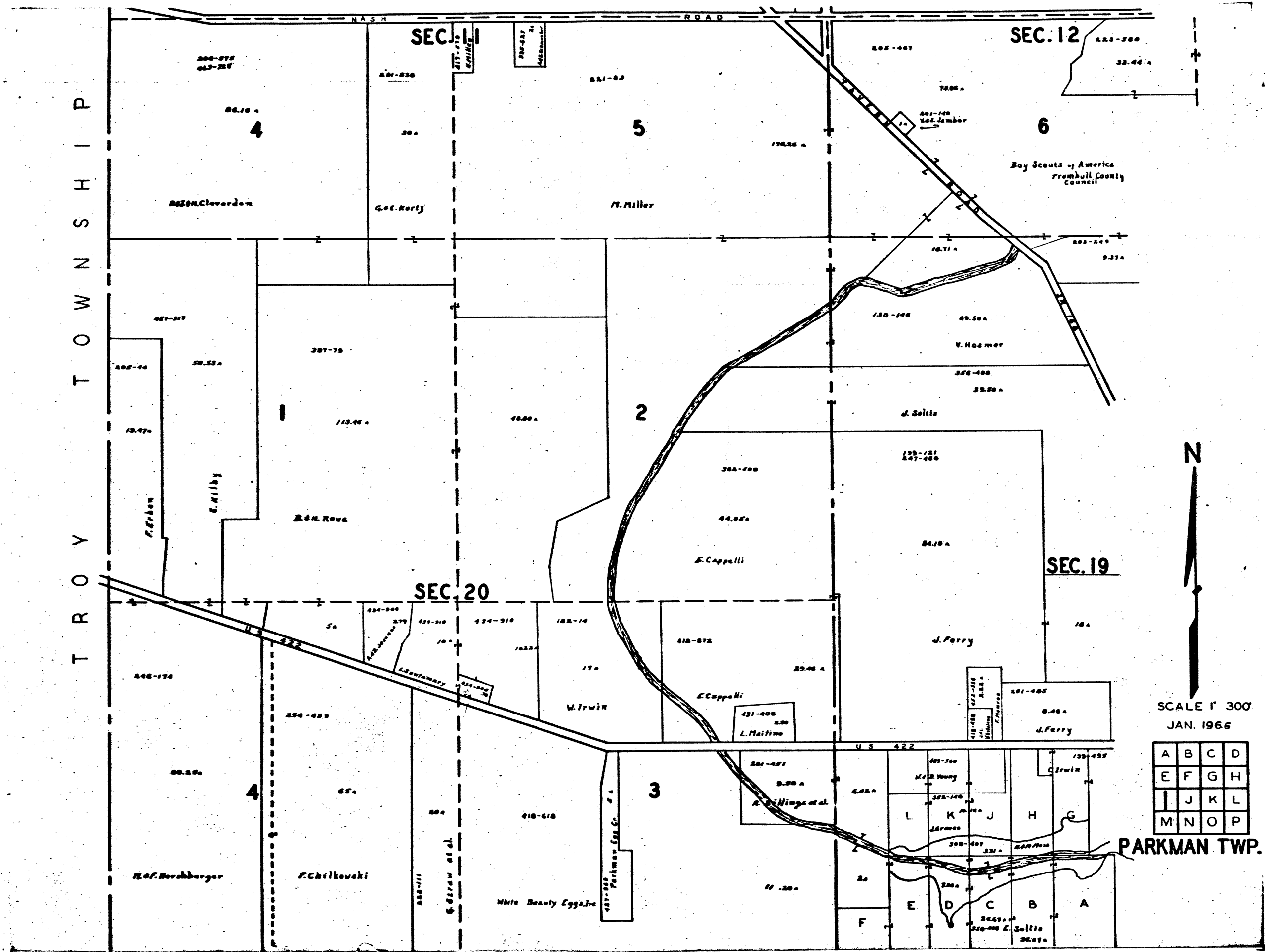


SCALE 1" = 300'
JAN. 1966

A	B	C	D
E	F	G	H
I	J	K	L
M	N	O	P

PARKMAN TWP.

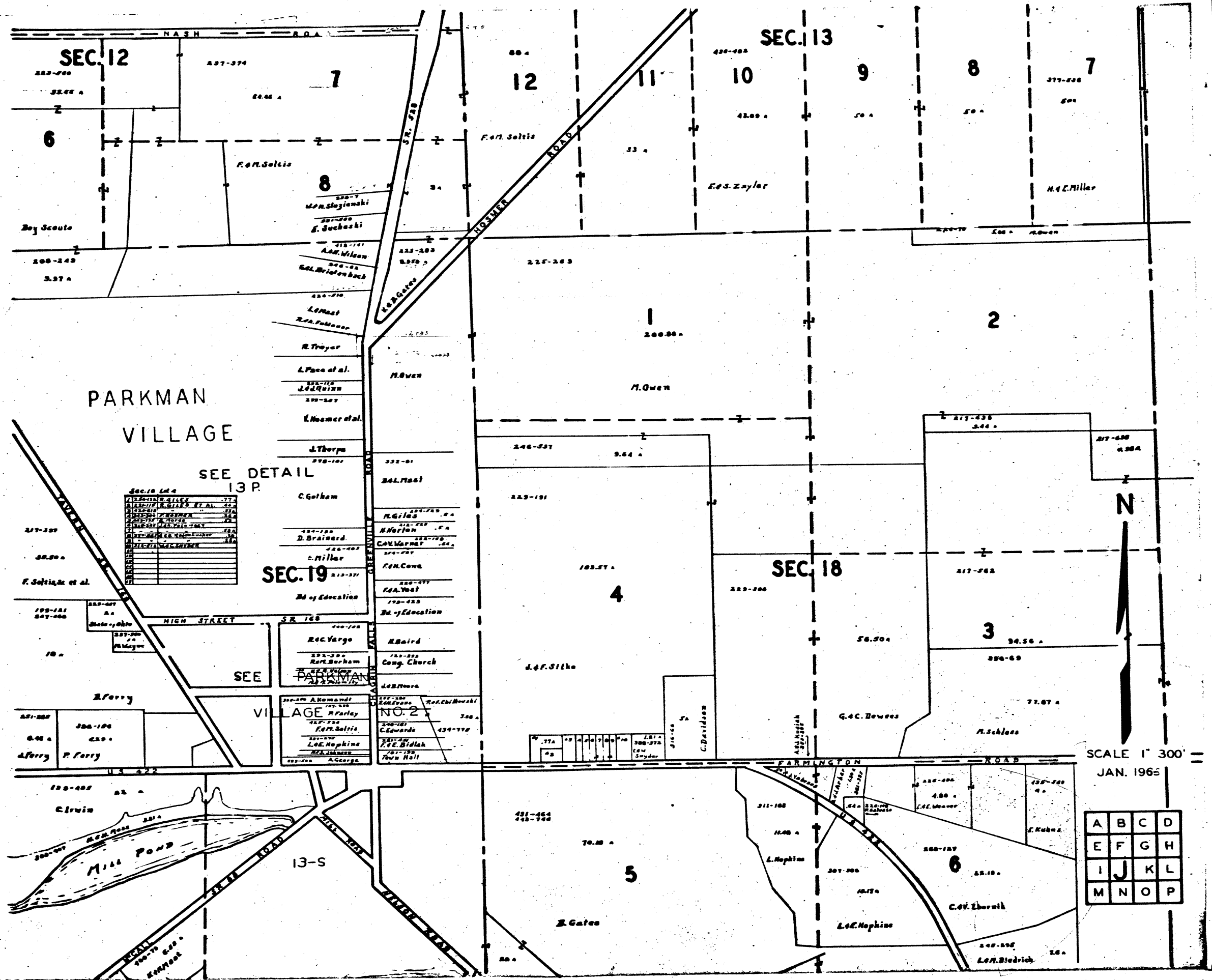
T R O Y T O W N S H I P



SCALE 1" = 300'
JAN. 1966

A	B	C	D
E	F	G	H
I	J	K	L
M	N	O	P

PARKMAN TWP.



PARKMAN
VILLAGE

SEE DETAIL
13 P.

Sec. 18 L44

112-200	W. G. GILLES	277
112-201	W. G. GILLES ET AL.	44
112-202	W. G. GILLES	52A
112-203	W. G. GILLES	52B
112-204	W. G. GILLES	52C
112-205	W. G. GILLES	52D
112-206	W. G. GILLES	52E
112-207	W. G. GILLES	52F
112-208	W. G. GILLES	52G
112-209	W. G. GILLES	52H
112-210	W. G. GILLES	52I
112-211	W. G. GILLES	52J
112-212	W. G. GILLES	52K
112-213	W. G. GILLES	52L
112-214	W. G. GILLES	52M
112-215	W. G. GILLES	52N
112-216	W. G. GILLES	52O
112-217	W. G. GILLES	52P
112-218	W. G. GILLES	52Q
112-219	W. G. GILLES	52R
112-220	W. G. GILLES	52S
112-221	W. G. GILLES	52T
112-222	W. G. GILLES	52U
112-223	W. G. GILLES	52V
112-224	W. G. GILLES	52W
112-225	W. G. GILLES	52X
112-226	W. G. GILLES	52Y
112-227	W. G. GILLES	52Z

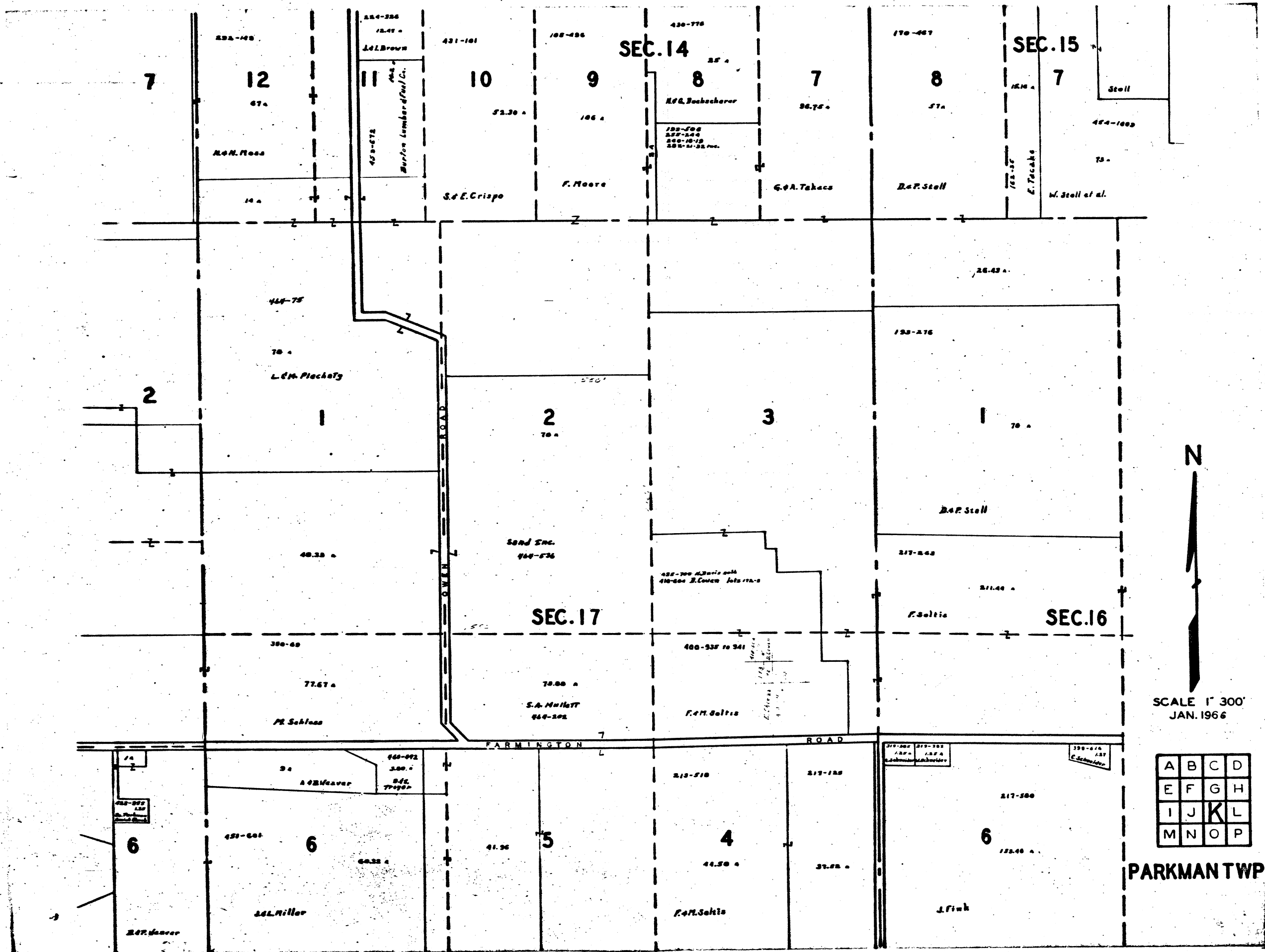
SEC. 19

SEC. 18



SCALE 1" = 300'
JAN. 1965

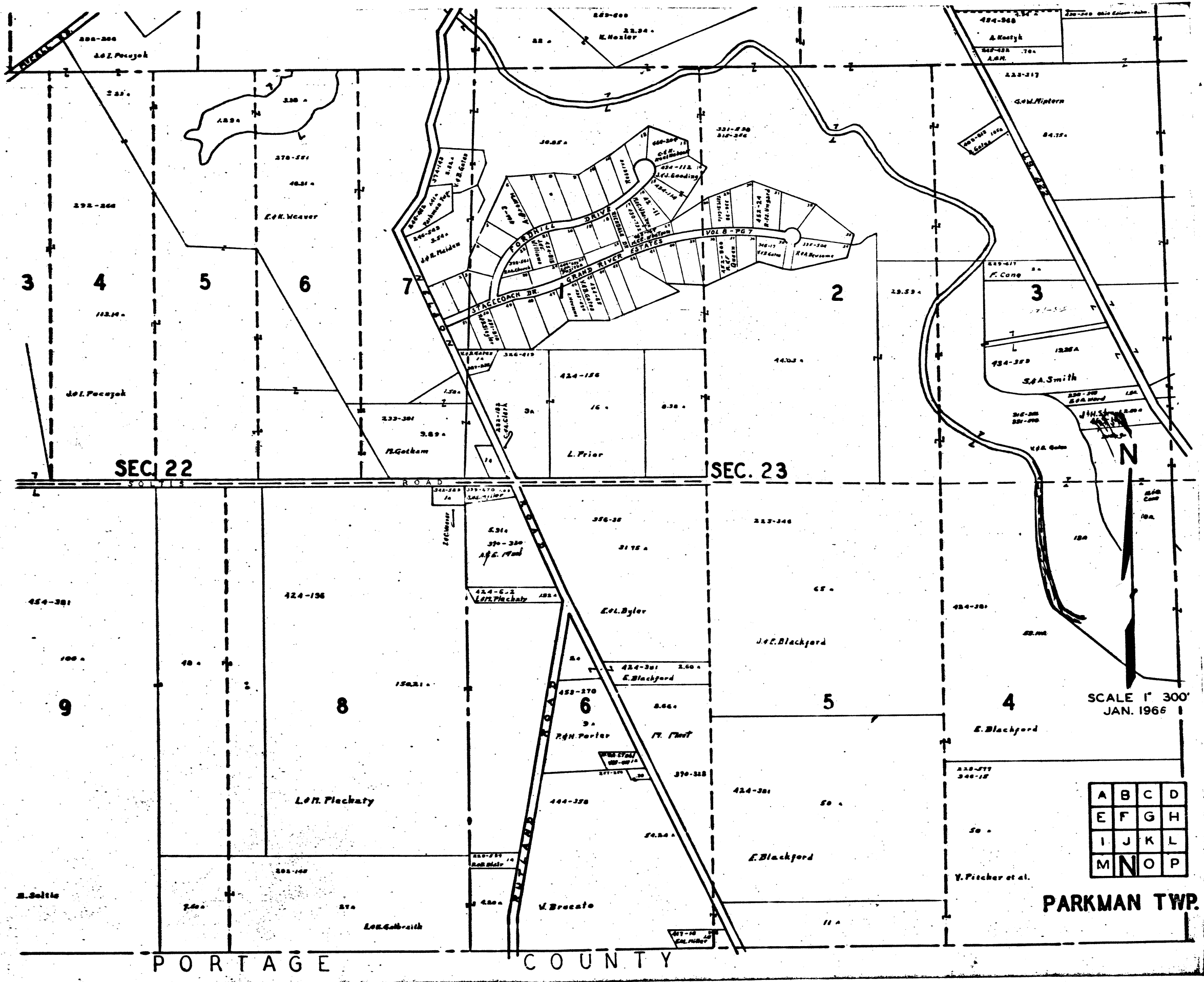
A	B	C	D
E	F	G	H
I	J	K	L
M	N	O	P



SCALE 1" = 300'
JAN. 1966

A	B	C	D
E	F	G	H
I	J	K	L
M	N	O	P

PARKMAN TWP



SEC. 22

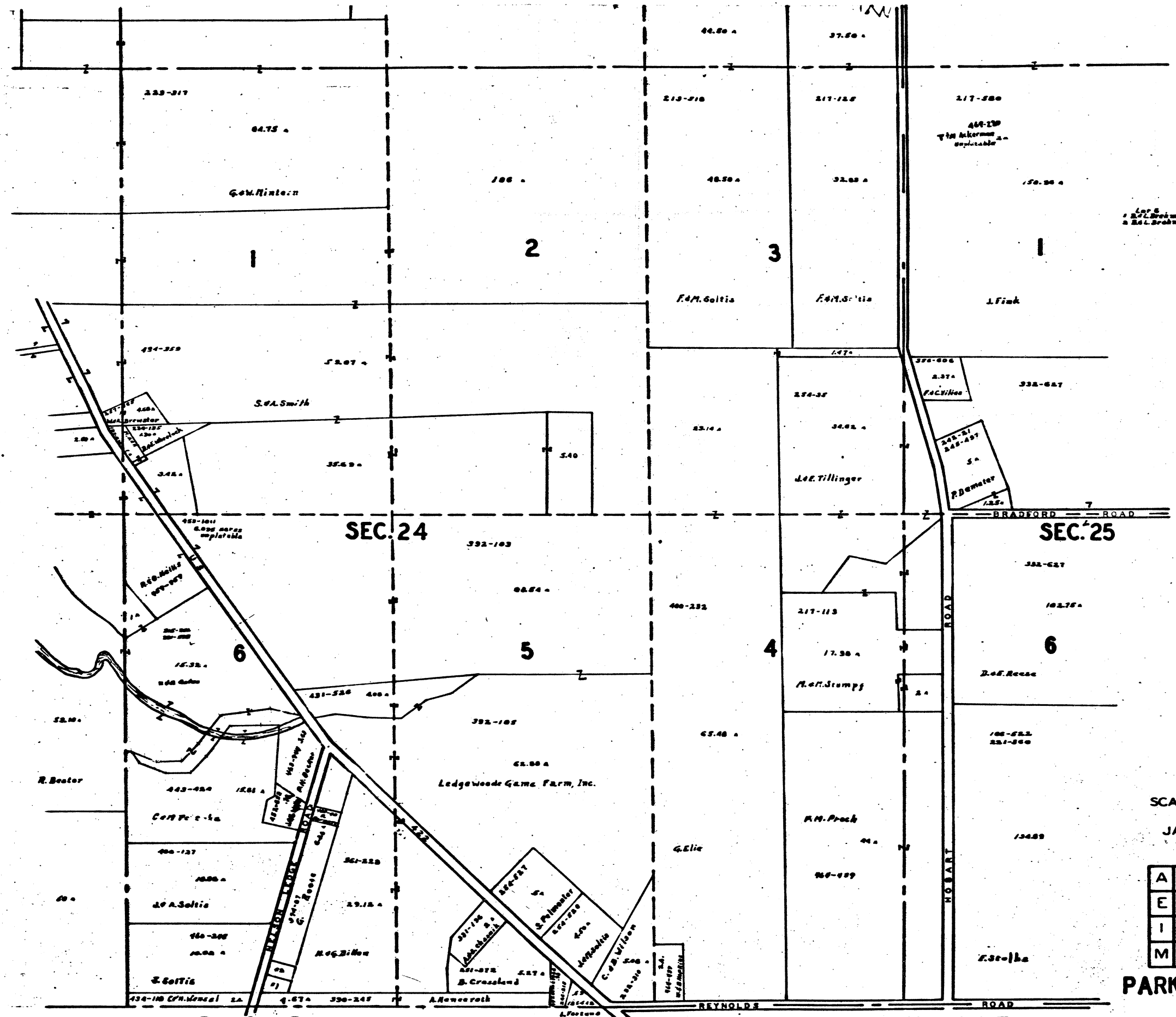
SEC. 23

SCALE 1" = 300'
JAN. 1966

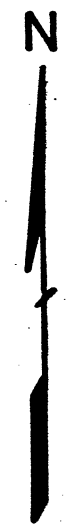
A	B	C	D
E	F	G	H
I	J	K	L
M	N	O	P

PARKMAN TWP.

PORTAGE COUNTY



Lot 6
 1 E.L. Brown 331-601 702A
 2 E.L. Brown 331-602 702A

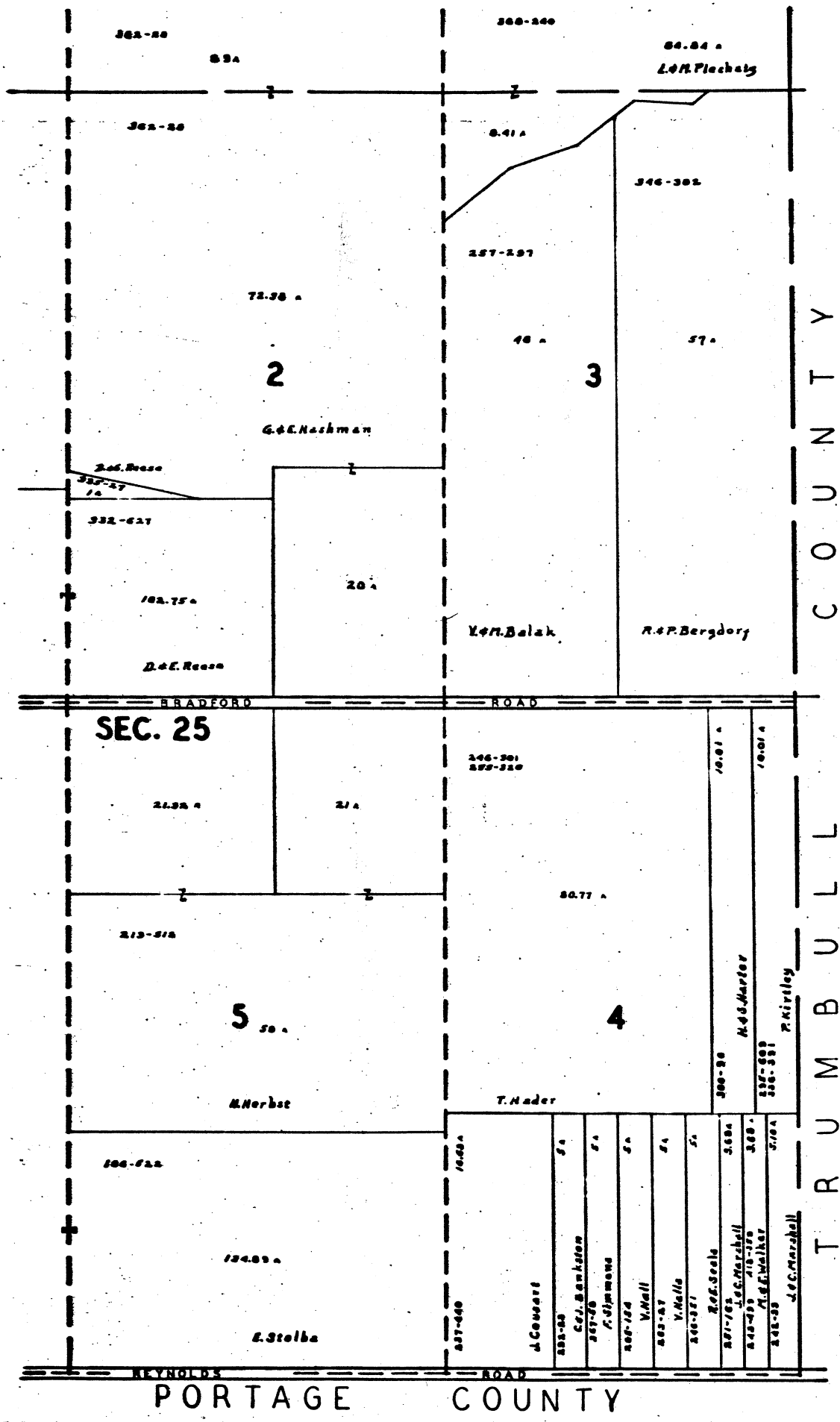


SCALE 1 300
 JAN. 1966

A	B	C	D
E	F	G	H
I	J	K	L
M	N	O	P

PARKMAN TWP.

P O R T A G E C O U N T Y



SCALE 1" = 300'
JAN. 1966

A	B	C	D
E	F	G	H
I	J	K	L
M	N	O	P

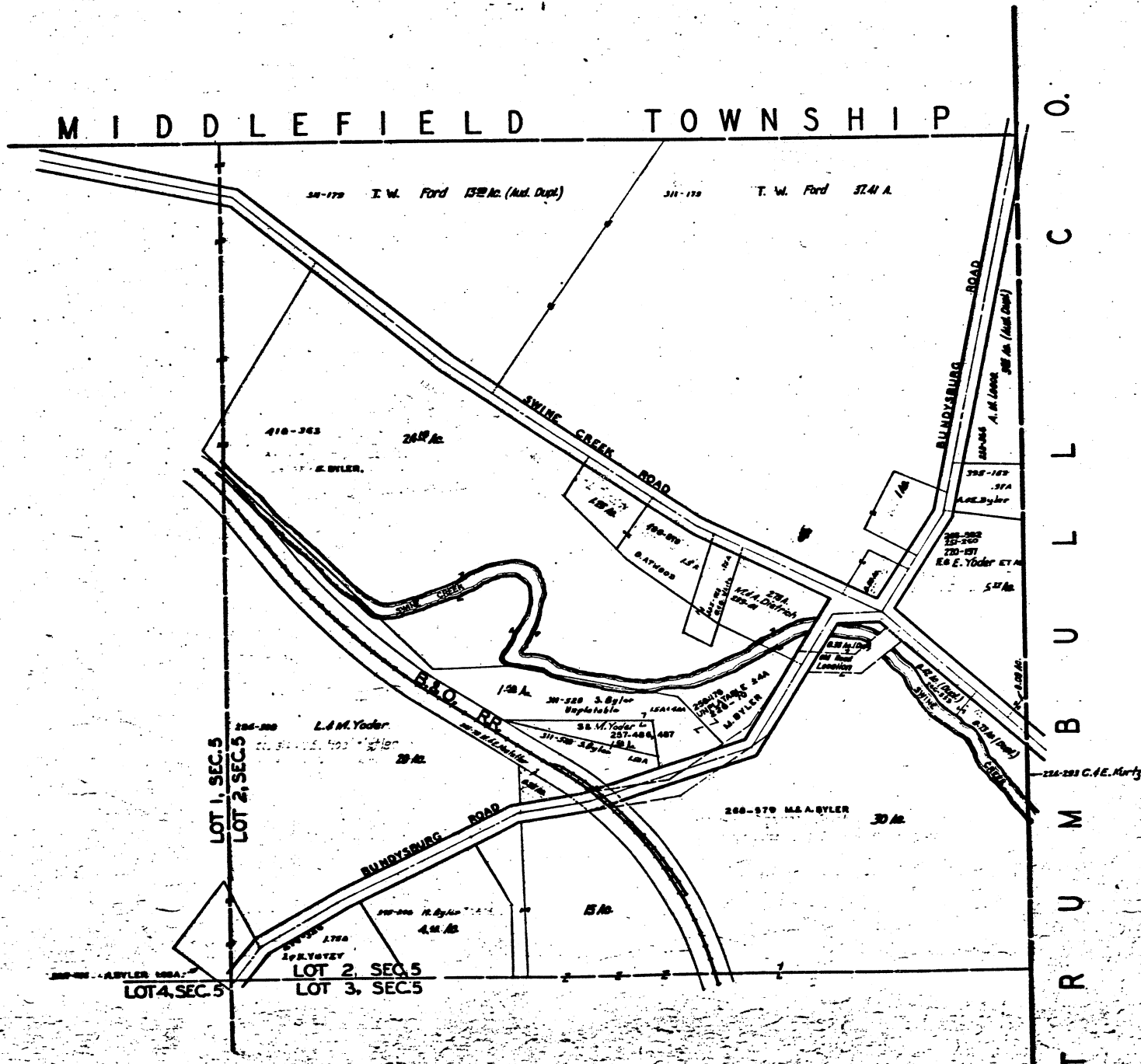
PARKMAN TWP

LOT 2, SECTION 5
BUNDYSBURG

PARKMAN T.P.

LOT 2, SECTION 5
BUNDYSBURG

M I D D L E F I E L D T O W N S H I P

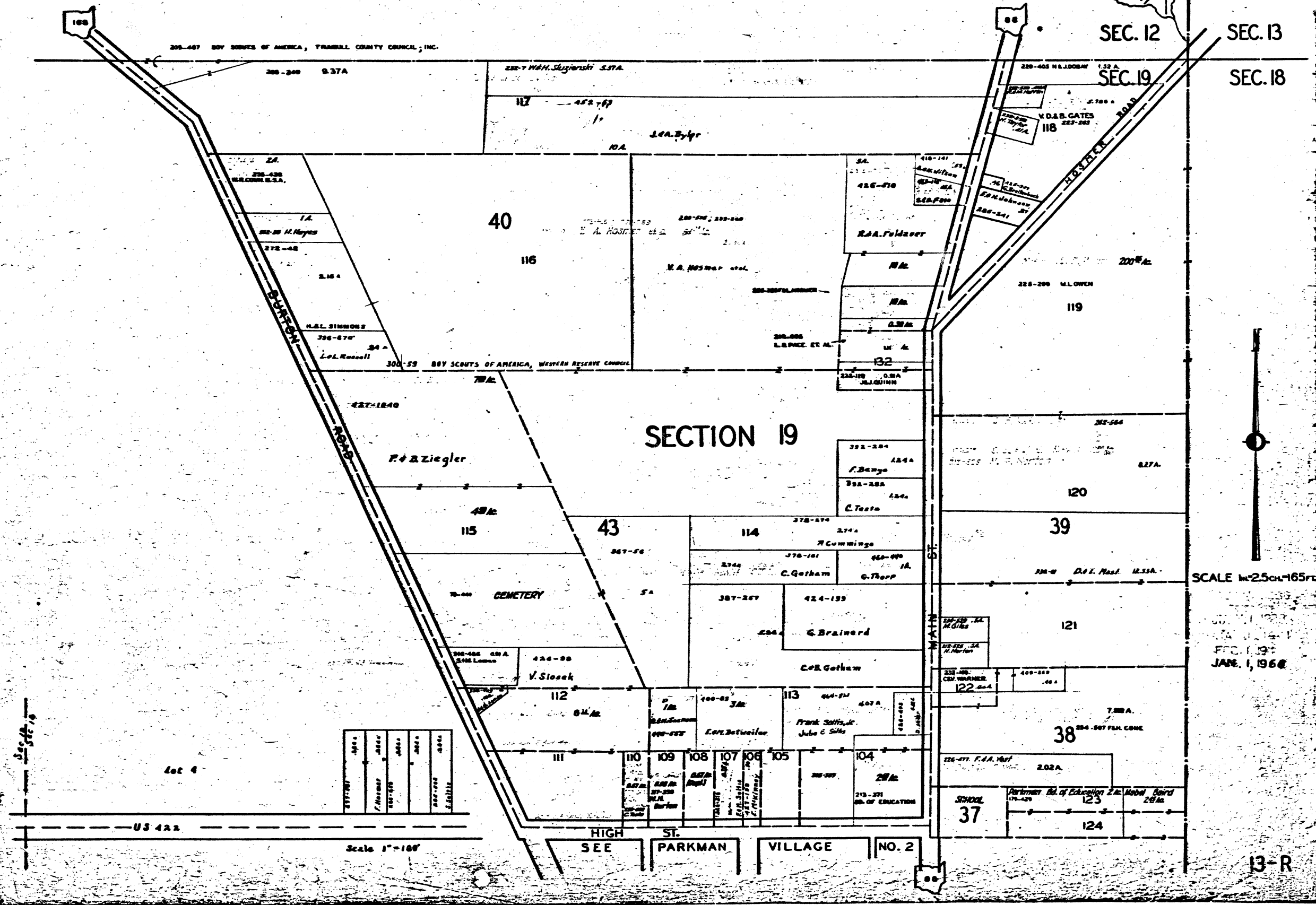


SCALE 1"=200ft.

FEB. 19
JAN. 1, 1966

13-Q

PARKMAN VILLAGE NO. 1



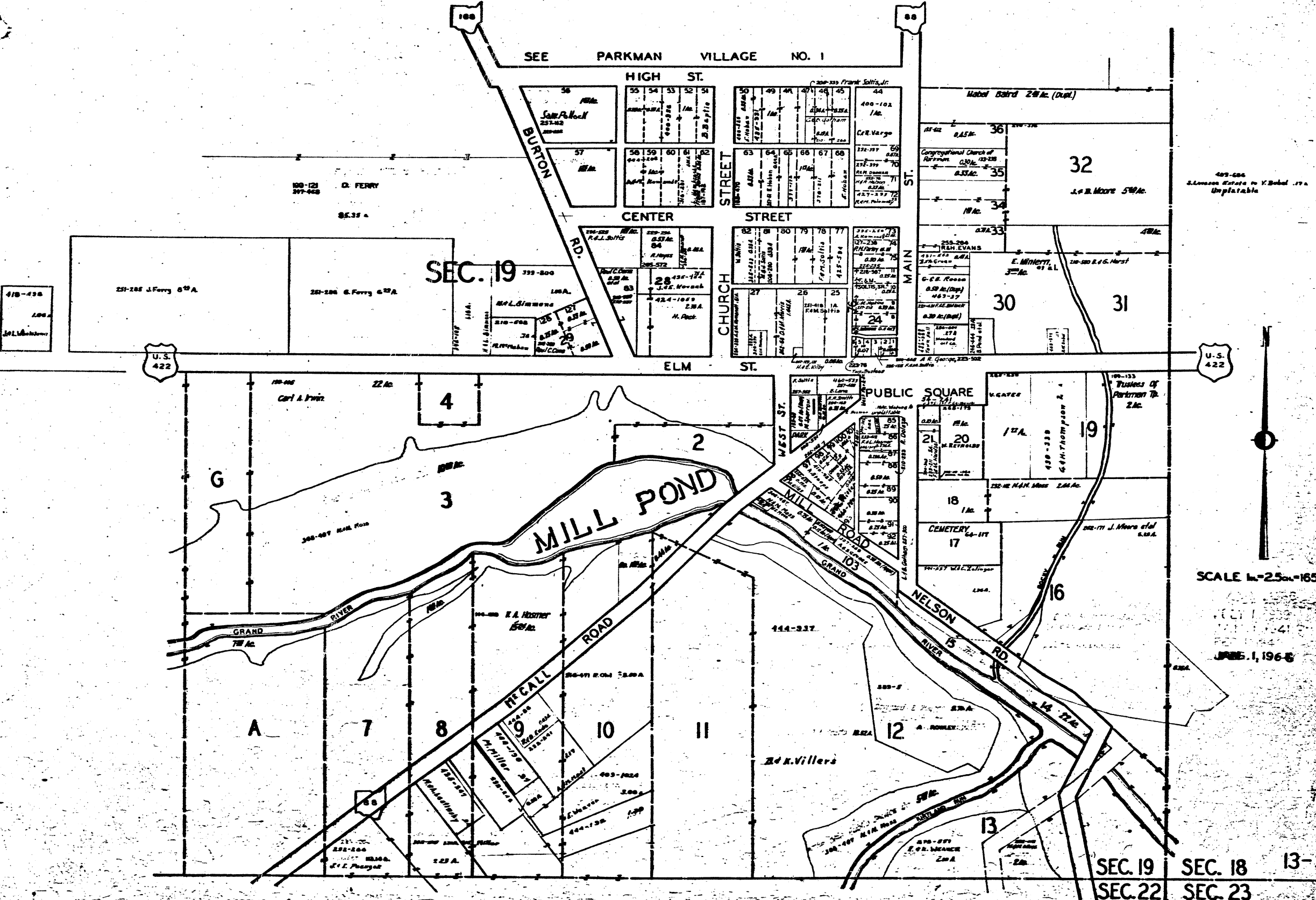
SCALE 1"=250'-165'

JAN. 1, 1968

13-R

PARKMAN VILLAGE NO. 2

SEE PARKMAN VILLAGE NO. 1



SCALE 1"=25' or 165m.

JUNE 1, 1968

SEC. 19 SEC. 18 13-S
SEC. 22 SEC. 23